



# HARBOR VILLAGE

HARBOR SHORES

MARINA DISTRICT ALONG THE SAINT JOSEPH RIVER

WALTON  
4 BDRM / 2.5 BATH



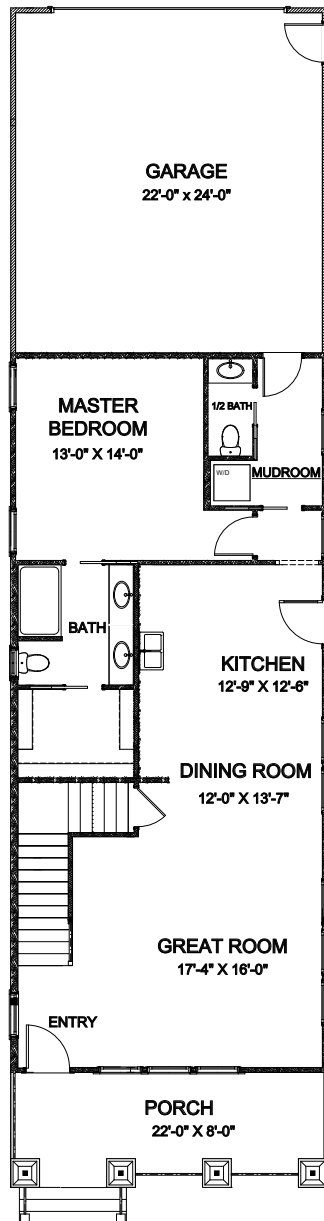


# HARBOR VILLAGE

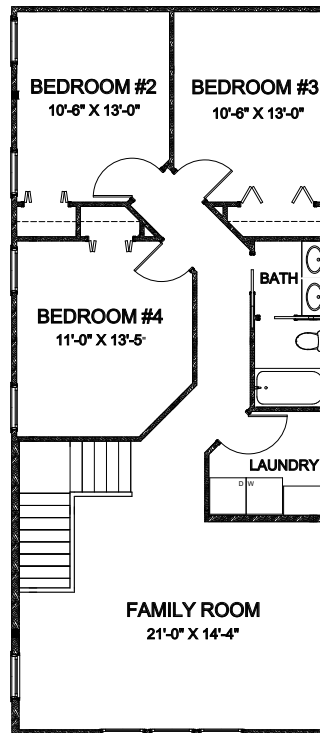
HARBOR SHORES

MARINA DISTRICT ALONG THE SAINT JOSEPH RIVER

## HOMESITES 17-22



FIRST FLOOR PLAN  
- 1100 SF



SECOND FLOOR PLAN  
- 1100 SF

As their name implies, SIDE YARD COTTAGES produce a coveted yard in an otherwise tight urban situation. By placing one side of the home on a zero lot line condition, the result is a functional "side yard". These cottages offer large front porches, open living spaces, lots of windows, and wonderful outdoor space. Built exclusively by Powell Construction, these homes will be built with green features that you will appreciate for years to come.



FAIRFIELD



MAYWOOD



STATE ST.