



HARBOR VILLAGE

HARBOR SHORES

MARINA DISTRICT ALONG THE SAINT JOSEPH RIVER

COMMODORE
4 BDRM / 3.5 BATH





HARBOR VILLAGE

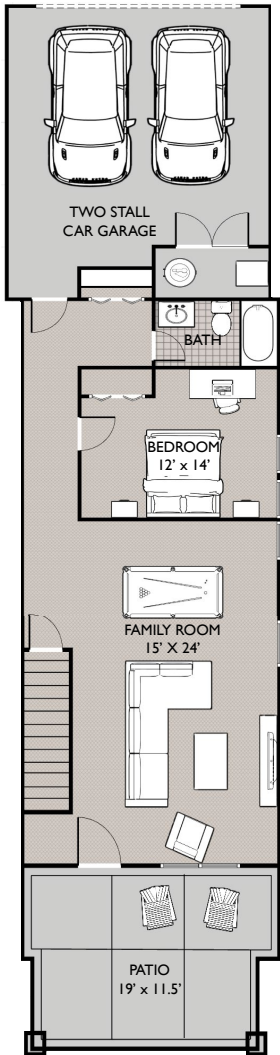
HARBOR SHORES

MARINA DISTRICT ALONG THE SAINT JOSEPH RIVER

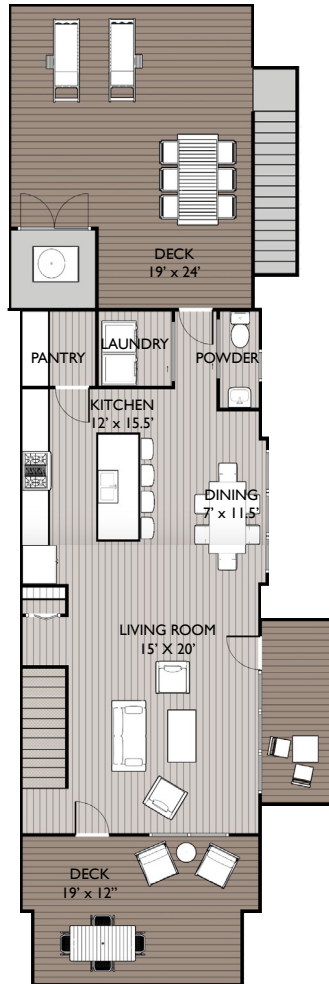
COMMODORE

4 BDRM / 3.5 BATH

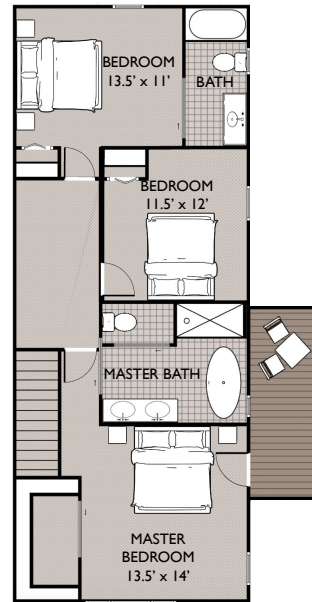
Located in Harbor Village, the Commodore offers 2625 square feet of spacious living area. The Commodore features 4 bedrooms, 3.5 bathrooms and an attached two car garage. Outdoor living spaces include a first level front porch and three additional covered porches, two on the second level and one on the third level. A stunning second level outdoor deck overlooking the marina provides the perfect space for grilling & gathering.



FIRST FLOOR PLAN
- 865 SF



SECOND FLOOR PLAN
- 820 SF



THIRD FLOOR PLAN
- 940 SF

