



# HARBOR VILLAGE

HARBOR SHORES

MARINA DISTRICT ALONG THE SAINT JOSEPH RIVER

DRIFTER  
3 BDRM / 2.5 BATH





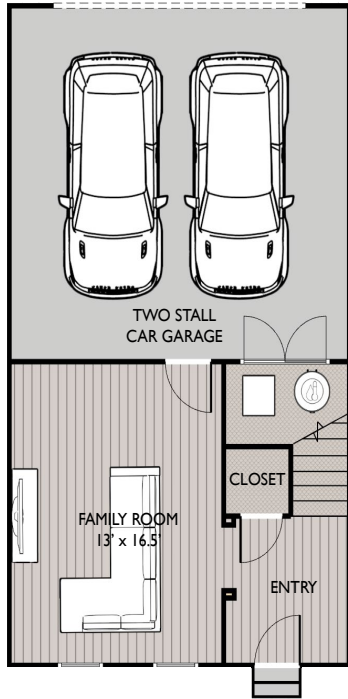


# HARBOR VILLAGE

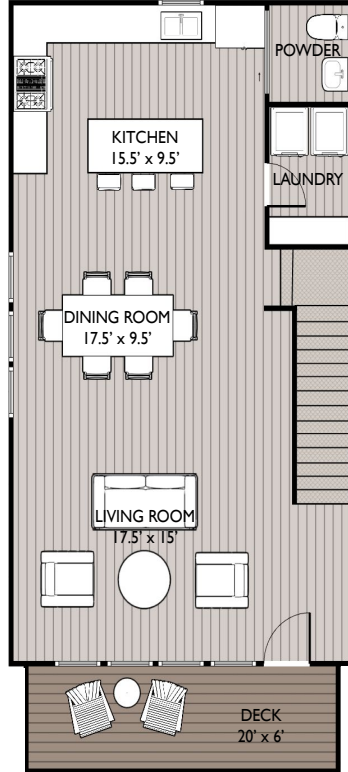
HARBOR SHORES

MARINA DISTRICT ALONG THE SAINT JOSEPH RIVER

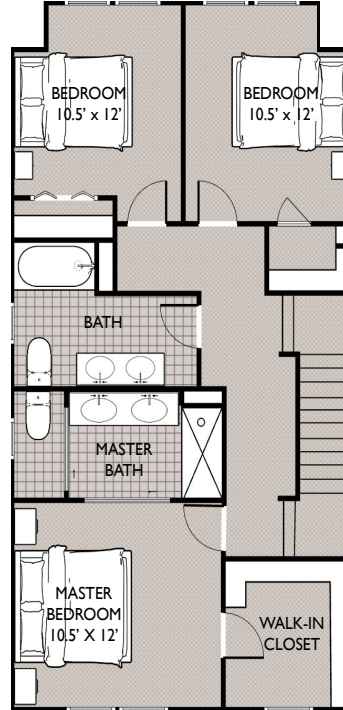
FIRST FLOOR PLAN  
- 385 SF



SECOND FLOOR PLAN  
- 835 SF



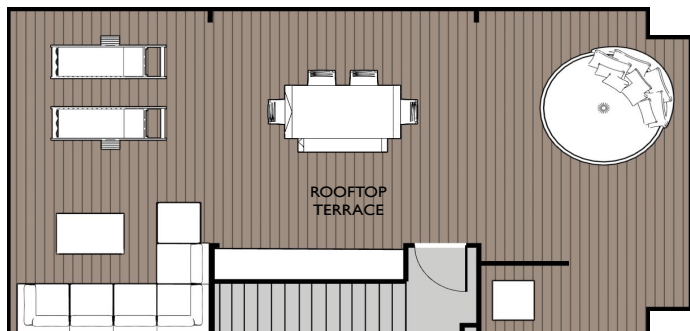
THIRD FLOOR PLAN  
- 880 SF



## DRIFTER

3 BDRM / 2.5 BATH

Located in Harbor Village, the Drifter offers 2100 square feet of spacious living area. The Drifter features 3 bedrooms, 2.5 bathrooms and an attached 2 car garage. Outdoor living spaces include a front patio and a spacious second level covered porch. A stunning rooftop deck overlooking the marina provides the perfect space for grilling & gathering.



ROOFTOP PLAN  
- 880 SF

